



# Information Sheet

## 13. VARIETIES

### 13.22 **Variety N36**

#### INTRODUCTION

**N**36 is a high sucrose variety that gives good cane yields on a range of soils (although performs best on medium to high potential soils - good alluvium, dolerite). N36 is recommended for annual harvesting. It is recommended for irrigated and rainfed areas.

**Origin:** SASRI, South Africa

**Year of release:** 2000

**Variety Code:** 90F0266

**Parentage:** 82F1225 x 78Z1635

#### CANE QUALITY & YIELD

**Tons RV:** RV yield compared to N19 is 106% early season, 108% mid season, 106% late season.

**Cane yield:** Moderate (lower than N14 and NCo376, similar to N19).

**RV content:** High (115%N14, 105%N19, 116%NCo376)

**Fibre content:** Moderate (101%N14, 99%N19, 97%NCo376)

**Purity:** High

**Fibre:sucrose ratio:** Low

**Non-sucrose:sucrose ratio:** Low

#### AGRONOMIC CHARACTERISTICS

**Germination (speed and reliability):** Rapid and reliable

**Stalk population (at harvest):** Medium: 105 000/ha

**Stalk mass (at harvest):** High

**Stalk height (at harvest):** Average

**Stalk elongation:** Moderately rapid

**Canopy formation:** Rapid canopy formation. Sparse canopy formed.

**Flowering:** Moderate

**Lodging:** Moderate

**Ratooning ability (speed and reliability):** Rapid and reliable

#### REACTION TO DISEASES & PESTS

**Smut:** Intermediate

**Mosaic:** Intermediate

**RSD:** Intermediate-susceptible

**Rust:** Resistant

**Leaf scald:** Intermediate

**Red rot:** Resistant

**Nematodes:** Susceptible

**Eldana:** Intermediate-susceptible

#### REACTION TO WATER STRESS

**Growth during severe water stress:** Moderate

**Recovery after water stress:** Moderate

**Ratooning after drought:** Moderate

**Poorly drained soils:** Intolerant

**Salinity tolerance:** Sensitive

#### RIPENER RECOMMENDATIONS



**Fusilade Forte:** Ground rigs (250 ml/ha), Aerial (275 ml/ha): Yes  
**Ethephon (1.5 l/ha):** No  
**Gallant Super:** No data  
**Tandem (Ethephon + Fusilade Forte):** No data

## HARVESTING

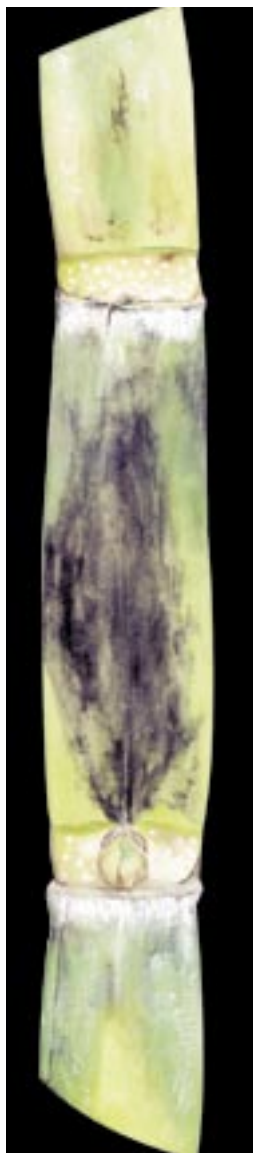
**Best months:** Apr-Nov

### BEST FEATURES

*N36 has a high sucrose content. It is better suited to annual harvesting on the medium to high potential soils with irrigation. It can be harvested throughout the year, although early to mid-season seems to be the best. Good yields have been obtained in irrigated valley bottoms in the Midlands (annual harvest).*

### LIMITING FEATURES

*N36 is fairly susceptible to eldana and must be planted with caution under rainfed conditions. Do not carry over on the Coast or in areas where there is water stress and eldana is a problem.*



## Identification Guide

### HABIT AND GENERAL APPEARANCE

N36 is a low population variety with medium to thick stalks, and a slightly open growth habit. The stalks often grow slightly bent. The canopy is fairly sparse, with erect dark green leaves, medium to broad in width.

### LEAF

**Blade:** medium width, erect, sometimes with bent leaf tips. Often there is light chlorotic blotching on both the midrib and blade.

**Sheath:** green, with hairs present and a lot of wax bloom. The trash can be peeled off fairly easily.

**Collar:** medium width, yellow-green, sometimes with slight purple.

**Auricle:** broad, long and pointed; on one side only.

### STALK

#### Internode

Medium length and diameter, staggered, sometimes with cracks. There are some corky markings present. Light yellow in colour, becoming yellow-green on exposure.

**Wax band:** medium width, fairly distinct.

**Bud furrow:** often present.

#### Node

**Growth ring:** medium, slightly protruding, light yellow-green.

**Root band:** medium width, light green-yellow in colour.

**Sheath scar:** slanting slightly.

**Bud:** medium, slightly longer than broad, arises at the sheath scar.

**Flange:** medium to small, with long hairs at the apex. Arises towards the top of the bud. Usually reaches the growth ring.